



Southhill Primary School

Happy
Confident
Prepared



A message from our Headteacher

There are many great things about being the Headteacher of Southill Primary and one of the best is showing visitors around. I am never prouder of our extraordinary school than when I can give people an opportunity to see what it is truly like. Visitors quickly see how children are engaged in their lessons and, by observing our children taking part in daily school life, they begin to understand the very high quality of relationships between staff and pupils.

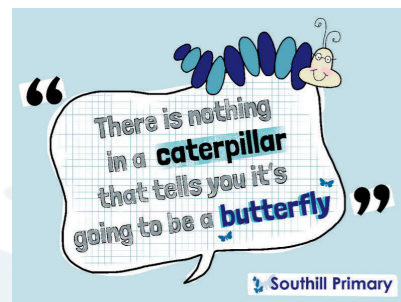
When acting as a tour guide, I emphasise the value we place on opportunities to learn and play with others in different classes. The size of our school is such that we know all our children and our families really well and this creates a caring and supportive school community unlike any other. Children are inspired to aim high and to achieve their very best in all that they do. They know they have the support, encouragement and expertise of everyone around them as well as the resources to make it happen. This, I believe, is the very heart of what makes Southill Primary such a remarkable school.

This booklet, together with our website and virtual tour, can only give you a flavour of what Southill Primary is like. If you can, please come and visit. Once you meet our staff and children and you see our incredible learning environment, you'll understand why I am so proud to lead this school. We look forward to welcoming you.



Paul Mason
Headteacher

p.mason@southill.dorset.sch.uk



Safeguarding

We recognise that the safety of our children is our most important priority. All our staff are fully trained to care for children in a vigilant and proactive manner and are backed by a comprehensive set of policies and procedures.

Everyone's welcome at Southill ...

We pride ourselves in providing a caring, friendly and inclusive environment. Our dedicated SEND co-ordinator supports the staff in planning for all the learning needs in school. We are especially proud of the achievement and progress of our children with special educational needs and disabilities. We believe that every child has the opportunity to achieve and to do well at school.

Aims

At Southill Primary we inspire children to be happy and ambitious, enabling them to excel by nurturing positive relationships, developing their confidence and preparing them to thrive within a global community.



Happy children who:



- love coming to school
- thrive in a safe, secure and caring environment
- aim high to achieve excellence and are proud of their achievements
- enjoy learning through an engaging and well-structured curriculum
- find learning fun, purposeful and challenging in ways that develops their own interests
- build positive and rewarding relationships
- are reciprocal, treating others with kindness and respect
- leave school with fond memories.

Confident learners who:



- can work independently and with others
- embrace the school day with resilience and enthusiasm
- face learning challenges in new and varied places and environments
- are encouraged to be resourceful and find their own way
- reflect on mistakes and aren't afraid to ask questions
- can seek help and support when they know they need it
- are secure in themselves and make choices accordingly.

Prepared citizens who:



- learn about living in Britain and the world
- understand their rights and responsibilities towards others
- believe they can effect change and make a difference
- have exciting and positive ambitions for themselves
- have broad horizons when thinking about their future
- accept and value others' differences.

Learning Environment

Children who come to Southill Primary are very lucky in many ways, but one is the fantastic environment provided for them to play and learn in.

Classrooms are bright, clean and colourful with working wall displays and interactive screens. Each are well-resourced and provide plenty of stimulus and inspiration.



Unit areas join pairs of classes, providing the benefit of quieter learning in smaller groups or wider spaces to get creative. They also feature reading corners, where children and adults can access reading books.



Central to our building is a spacious hall which connects with all units and classrooms. Assemblies and large group gatherings take place here, along with indoor PE lessons, lunches, performances, events, celebrations and festivities.

In 2021 we opened our very own library, bursting with a selection of brand new books covering a wide range of topics and genres with calming space to read and relax. Children enjoy dedicated sessions here weekly, as well as access every lunchtime where they can browse and borrow books themselves.



We are fortunate to have large areas of outdoor space for our children to enjoy. Classes spend time outside every day, in addition to playtimes, utilising the exceptional resources within our environment such as an outdoor classroom, school pond, quiet garden, trim trails (including two purpose-built climbing frames suitable for both KS1 and KS2), a theatre, story-telling seating, two playing fields with a football pitch and an athletic track, three playgrounds with basketball and netball courts (including equipment such as trikes and scooters), a designated Forest School area with a fire-pit and also a Woodland Walk - our onsite nature trail.



Our Woodland Walk allows children to observe and explore nature first-hand. Pupils regularly visit our very own nature trail to learn about changes in the seasons throughout the year. Our shady seating areas enable learning outside, to watch for wildlife or even to enjoy a snack and a drink.

On each playground, purposeful climbing frames are designed to help develop children's fine and gross motor skills, balance, proprioception, strength and core stability with a series of multiple crossing and traversing points. Challenges can be taken on individually, or in groups.



Our 'friendship benches' ensure that everyone has a friend and someone to talk to at playtimes. Or even just a chance to sit down quietly and take in the scenery!



Launched in 2022, Forest School is an inspirational, child-centred learning process that offers opportunities for growth through regular sessions. We are fully qualified to deliver these, allowing children to lead as they explore a programme which enables repetitive contact with nature using all their senses and enhancing holistic development in key areas such as spiritual, emotional, intellectual, physical and communication/social skills. Children also benefit from a boost in their confidence and self-esteem, improve team-working skills and boundary recognition as they relish new experiences, challenges and opportunities.

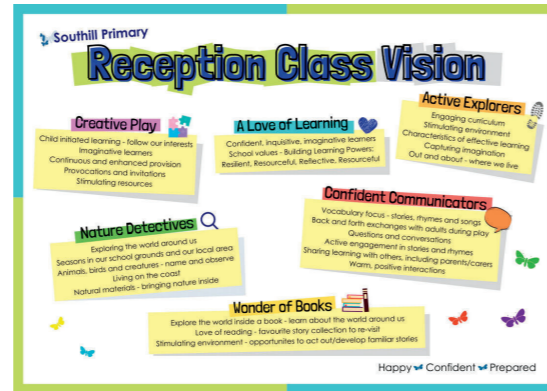
Reception Class

Early Years Foundation Stage

Here at Southill Primary, we know that the first year of school is vitally important in laying the foundations for a lifetime of learning. We want our children to love coming to school so we do everything we can to make it exciting for them. We work closely with parents so they know their children are safe, happy and making great progress in their learning every day.

Our vision has six main areas. In Reception you will see creative play, a love of learning, wonder of books, confident communicators, active explorers and nature detectives.

In Reception, children begin their journey in becoming confident and articulate talkers, readers and writers. Our children love learning to read and write because we make it so much fun. We develop their imagination and inspire them to write by choosing exciting stories and themes.



Maths is taught every day through practical, play based games and activities. Children develop as mathematical thinkers by playing with numbers and shapes, looking for patterns and by solving problems.

Making the most of our outstanding outdoor environment, children are given the opportunity to play and learn outside every day by going on regular nature walks and trips.



When joining our school, Reception children are 'buddied up' with a child in Year 6. This is a very special relationship for both children and our Reception pupils very much enjoy learning from the older children in our school. Buddies eat lunch together, read, learn and play together during the day.



Our Curriculum

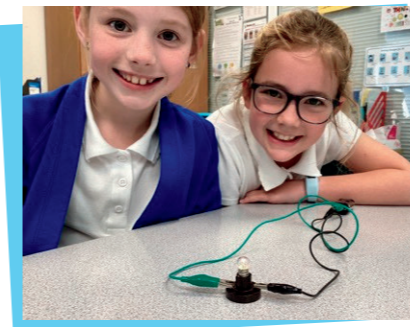
The Southill Primary curriculum is designed to provide a broad and balanced education that inspires all our pupils and meets their needs. It provides opportunities for children to develop as independent, confident and successful learners with high aspirations, who know how to make a positive contribution to their community and the wider society.



We ensure that academic success, creativity and problem solving, as well as physical development, wellbeing and mental health are key elements that support the development of the whole child. Our aim is to promote a positive attitude to learning.

Our school celebrates and embraces diversity while supporting children's spiritual, moral, social and cultural development, ensuring that they are well prepared for life in modern Britain.

Our curriculum incorporates the statutory requirements of the National Curriculum. Reading, writing and maths are taught in every class each morning. Other subjects such as Science, Art and Design, Geography, History and Design and Technology are taught in the afternoons through a range of subject-specific, knowledge-rich projects which are carefully designed to help children build knowledge and skills. PE, Music, French, PSHE (Personal, Social, Health and Economic) and RE are also taught in the afternoons.



English

Our aim is to enable children to speak, read and write fluently and confidently so that they are ready for the challenges of secondary education, can participate fully in society and have the best possible choices in their future careers and aspirations. The ability to read and write well has a direct impact on all areas of the curriculum, therefore reading and writing form an important part of every other lesson.

Reading

We are very proud of our reading culture and everyone who visits will tell you that this shines bright. Reading is led by an enthusiastic and dedicated Senior Leadership Team and advocated by every pupil, parent, carer, and staff member in the school community.



Through reading, pupils have the chance to develop culturally, emotionally, intellectually, socially and spiritually and so it is at the very heart of our curriculum and informs everything else we teach. Because it is so important, throughout the school pupils begin each day by developing their reading skills. In the lower years, this takes place in Phonics. These lessons are carefully planned to develop children's skills and confidence day-by-day. We are proud of our phonics teaching; our outstanding results are some of the highest in the country! From Year 2 onwards, whole class daily reading sessions are designed to inspire and enlighten children with rich, challenging texts.

Reading enables pupils to acquire knowledge and to build on what they already know. We invest heavily in training our staff to be reading teachers and in books and other reading materials to excite, inspire and encourage all children to read for pleasure. As well as in our new purpose-built library, each class is stocked with the very best children's literature, from the classics to the latest releases. To ignite their interest and enable children to get the most from each of their projects, each class has a set of brilliant non-fiction books and reading from these is incorporated into lessons.



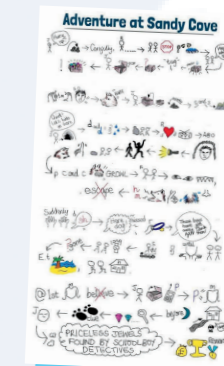
Reading Champions (our team of enthusiastic ambassadors) meet weekly and are involved in library management, book recommendations and multiple reading projects which they help to implement across the whole school based on their very own ideas. Our school library is a popular place to hang out!

Writing

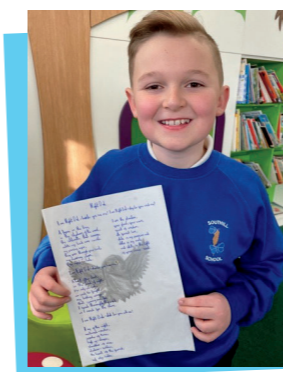
Writing is a primary means of expression and communication. By the end of Year 6, we want our pupils to be confident in writing effectively for any given purpose. We have developed a carefully sequenced approach to writing based on Pie Corbett's Talk for Writing. Through our exciting curriculum, pupils are taught the technical skills to write with fluency and accuracy. Our creative approach nurtures the imagination and encourages children to write for pleasure inspired by their own interests.



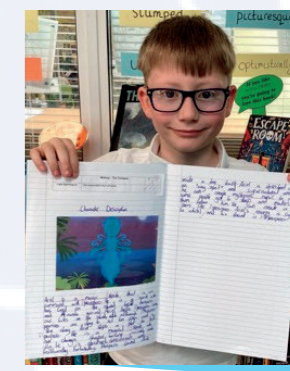
Children are immersed in Talk for Writing from Reception to Year 6, allowing them to build on all their previous learning. They are taught how to compose stories and how to create certain effects (e.g. suspense) in their writing. The same process applies to the teaching of non-fiction writing. Children explore quality model texts, and draw upon their structure and language to create their own pieces of writing. Teachers act as expert models of the writing process in daily shared writing sessions and there are regular opportunities for children's writing and ideas to be shared, displayed and celebrated.



As part of our ambitious writing curriculum, we introduce our pupils to the world of Shakespeare. In Years 3 and 4 children learn about Macbeth and The Tempest, including a performance. This is linked with the opportunity to stay in London and visit Shakespeare's Globe to work with trained actors.



Talk for Writing lessons at Southill Primary are lively, multi-sensory and inclusive for all. Everyone joins in and can succeed. As soon as children are able to form most letters correctly and have a good pencil grip, we teach a fluent and legible handwriting style that empowers them to write with confidence and creativity in line with our Handwriting Policy. We encourage children to 'have a go' at writing as soon as possible and to use their phonic skills and knowledge to spell.



Maths

Children are taught Maths every day using the White Rose scheme. This ensures progression of skills and knowledge across the school from our youngest mathematicians in Reception, all the way to Year 6.

We pride ourselves on delivering an engaging curriculum with the use of a wide range of resources at the very heart of what we do. Each day, children are challenged by a problem-solving activity which requires them to talk mathematically with their peers, link ideas and to demonstrate their thinking.



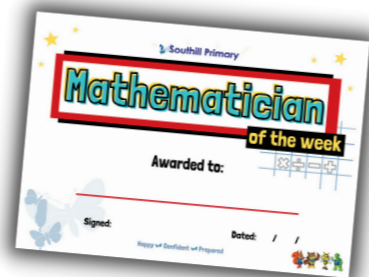
Our Maths curriculum places an emphasis on learning concepts through exploration and teaching children efficient methods of calculation. Practical resources are always available for the children who develop a strong independence in their learning as they move through the school.

Our pupils discover that Maths brings an exciting journey of discovery, understanding and a lifetime of opportunity!

Parents are encouraged to support their child at home, we set a weekly maths challenge as part of Home Learning. We are always on hand to help if needed.



As with all subjects, we regularly celebrate and recognise children's achievements in Maths throughout the whole school.



I chose this method because ...

I know it makes sense because ...

I can check this answer by ...

I think this method is better because ...

Other Subjects

At Southill Primary, children study subjects such as Science, History, Geography, Design & Technology and Art & Design through subject-specific projects. These creative, knowledge-rich projects provide opportunities to explore and experience each area in depth – to become artists, designers, geographers, historians and scientists!



We are lucky to have a specialist music teacher who focuses on engaging pupils with creative and practical lessons using innovative technological approaches. Children compose, sing and learn to play a wide variety of instruments and they tell us that they love music! They also have the opportunity for guitar and drum tuition from visiting teachers.

Ask any of our children about the different ways they are helped to be fit, healthy and active, and they will have much to tell you. We pride ourselves on the different ways we go above and beyond to encourage interest and enthusiasm for keeping active.

The foundation of all our good work in this area are our PE lessons. Children take part in these weekly, either in our hall or on one of our playgrounds, when they are led by the teacher in a variety of carefully planned and varied activities such as hockey, tennis, basketball and gymnastics. Children also get chance to go swimming with their class. PE at Southill Primary is lively, exciting and a lesson that is very much looked forward to.



That's not all, of course. Our sporting teams take part in many local games and competitions, ensuring children are given as many opportunities to represent their school as possible. Sporting achievements are celebrated in assemblies and children absorb regular key messages about the importance of physical activity and the benefits to their wellbeing. Our families can get involved too with frequent fun activities such as Fitness Thursdays, Healthy Selfies, Bike Squad and the Big Walk and Wheel!



Our curriculum is well-sequenced, ambitious and challenging. It ensures progression of knowledge and skills as each project is designed to build on children's prior knowledge, to help them know and to remember more, to ask big questions and to see connections and relationships. These projects are often enhanced with a trip to deepen children's understanding.

Building Learning Power

Prepared for the future

In our fast-paced world, we can't know exactly what knowledge and skills children will need in the future, but we can get them ready to deal with whatever challenges they will face and inspire them with a love for learning which will remain with them throughout their lives.

We believe that by teaching children how to collaborate with others, to solve problems and to persevere in the face of challenges, they will develop 'learning powers' which can then be applied to whatever skills or knowledge they choose to pursue in their adult lives. We are teaching children how to learn so that they are ready to choose the 'what to learn' part for themselves!

We believe there are four key attributes of independent, successful learners. With the children's help we came up with fun, colourful characters to represent these characteristics and to help the children understand them better.



Ninja Nutmeg

They are **resourceful**

They are curious and ask questions. They think about what they have learned before and know what resources they can use to help them.



Sir Owlington

He is **reflective**

He thinks about what he has done before and tries to improve his own work. He takes pride in the things he can do already, but is always aware of how something could be even better.

Captain Shelby

He is **resilient**

He doesn't give up when things get difficult. He keeps trying until he succeeds!



Agent Buzzbee

She is **reciprocal**

She knows when it would be best to work by herself and when to work with others. She listens to her teammates and learns from them.



BLP postcards are regularly sent home in recognition of those children who display elements of these learning powers at school. Staff are pleased to spot these attributes and children are always keen to collect them all!

OUTSTANDINGLY HAPPY

@ Southhill Primary

Here at Southhill Primary we are really proud of our Outstandingly Happy status, awarded to us in June 2019 in recognition of our positive thinking and wellbeing focus throughout the whole school.

What began as part of an ambitious and revolutionary project in collaboration with The Art of Brilliance implementing several positive thinking strategies and techniques, has since grown into a very important part of our daily lives. Positivity runs through the veins of our school. We have found that having a positive attitude not only helps us with our learning but most importantly boosts our confidence, self-esteem and general wellbeing. As a result this naturally leads to more a happier life and we are more likely to be successful too.

Be a 2%er!

Be a 2%er! NOT a Mood Hoover. This is a well-known phrase here at Southhill Primary, we take pride in being part of the 2% of people in the population who choose to have a more positive outlook, it really works! We regularly celebrate children who display this attitude.

Alongside this, our tips for being 'outstandingly happy' include:

Do it better than you have to - always putting in that extra effort to ensure a real sense of achievement.

Choose to be positive - you can't make yourself feel happy, but you can choose to be positive which always leads to a much happier day!

Understand your impact - smiling is infectious! By choosing a brighter response you are more likely to spread this feeling to others around you too.

Huge, unbelievably awesome aspirations - aim high!

We regularly discuss, plan and celebrate our aspirations, with focus on knowing which steps are needed in order to achieve them. Supporting children to aim high also ignites their imagination, where anything is possible. Our children dream of becoming astronauts, zoo keepers, musicians, vloggers, business owners and (the best) fish and chip sellers!



Trips

Learning outside the classroom is a very important part of our curriculum. We know that the most meaningful and memorable learning occurs through real-life, practical or hands-on activities. We have designed a sequence of ambitious day trips and residential activities that give children new and exciting experiences that will inspire them to reach their true potential. Our trips raise aspirations, preparing our young people with the life skills and independence they need for the future. We aim to ensure that by the time children leave us in Year 6, they are confident and resilient and that they have created many happy memories to take with them.

We value learning outside the classroom so highly that we have made it our policy that, where possible, children should go out on a trip at least once per term. In Reception and Key Stage 1 children are offered the chance to explore local surroundings including the chance to learn about healthy eating and where food comes from. In Key Stage 2 children begin to go a bit further afield such as Stonehenge, museums, theatre trips and topical places of interest.



From Year 3 children are offered many opportunities to stay away from home with their class. We have designed an impressive programme of residential activities aimed at building children's confidence and independence. These unique experiences include locations such as Leeson House in Swanage where they explore how to survive in the wild by learning bushcraft skills, but traditionally as our first residential they will also learn about being away from home, sleeping in a dormitory with their friends. We also head up to London, touring Shakespeare's Globe as well as visiting The British Museum and London Zoo. The Welsh Border offers the thrill of the great outdoors, by canoeing along the River Wye. An epic week in St Ives, Cornwall boasts the chance to learn how to surf on one of the UK's most beautiful beaches, as well as visiting The Eden Project, Leach Pottery, Bodmin Jail and enjoying an exhilarating rib ride to Seal Island!

All our trips and residential activities result in long-lasting memories for our children, forming treasured highlights of their journey with us here at Southill Primary.

Clubs

Southill Primary is a healthy school and children enjoy all aspects of keeping active. As well as our super sporting teams such as football, cricket and netball, who take part in many local matches, we also have a wide range of after school clubs including arts and crafts, yoga, mindfulness, cookery, drama, ping pong, computer animation, music and our popular Southill Primary Rock Band.

KS2 children have the opportunity to take part in both our Rock Band and POP Stars groups, learning how to play musical instruments such as electric guitar, drums, keyboard and use of vocals while working together as a team, exploring and developing new musical abilities. These clubs conclude with concerts to our whole school, to parents, carers and families and often at school community events. You'll find these performances on all our media channels, they're not to be missed!



Wraparound Care




From 8:00am every day, we provide a breakfast club offering nutritious and filling breakfasts with a choice of cereals and toast, for a small fee. Children also enjoy a wide variety of fun and engaging activities such as board games, Lego, puzzles, colouring and books. It's a great way to start the day!



For families needing after-school care, we are lucky to have a very popular 'Kool Kidz Club' situated right next door who collect children daily from our school hall. They offer a happy and relaxed atmosphere maintained by qualified, experienced and friendly staff, often making use of our school grounds after hours. The club is open for children aged 4-12, running until 6:00pm Monday-Thursday and 5:30pm on a Friday. They can be contacted on 01305 780857.



Sycamore Road
Southill
WEYMOUTH
Dorset. DT4 9UF

 office@southill.dorset.sch.uk

01305 773144

www.southill.dorset.sch.uk

