



# Southill Primary School

## Class Teacher

## Recruitment Pack



**Happy**

**Confident**

**Prepared**

# Welcome

Thank you for considering the opportunity to join our team at Southill Primary.

We're so proud of our thriving, happy school. We want all our pupils to be excited to come to school every day and to go home buzzing with stories about the exciting things they have learned. We celebrate the uniqueness of every child and nurture their talents and interests.

We are looking for a class teacher who is positive, enthusiastic, kind and creative.

The successful candidate will embrace our commitment to ensuring that Southill Primary pupils get an exceptional education with a wealth of extra-curricular experiences which contribute to their personal development. They will be committed to the wider values of the school and community.

The position will be full time and permanent.

We hope you find this recruitment pack informative. If you wish to find out more about our school and this opportunity please schedule a visit so you can experience first-hand the warmth of our officially 'Outstandingly Happy' school and have the opportunity to meet with our wonderful staff and pupils.

We look forward to welcoming you to Southill Primary.

# Why Southill Primary?

We are a one-form entry primary school with a strong community and awesome aspirations for our pupils. Here at Southill, we're recognisably unique. We pride ourselves in building high quality relationships between our staff and pupils, and we invest in our children's interests - nurturing their talents and skills within an inclusive environment where everyone is well prepared to achieve.

## Our Aims and Ethos

*Southill Primary inspires all children to be happy and ambitious, enabling them to excel by nurturing positive relationships, developing their confidence and preparing them to thrive within a global community. Our aims for children who attend our school is to develop happy children, confident learners and prepared citizens who accept and value others' differences.*



A Southill Primary pupil is empowered with kindness, consideration and a positive perspective, forming a unique and distinctive flavour which embeds throughout our whole school.

Children naturally adopt and actively encourage an inclusive and caring approach, they understand the value and importance of their actions and are able to recognise and reflect as needed, with strategies and resources to support them such as friendship benches and pupil representatives.



Pupils at Southill Primary are able to utilise our exceptional indoor and outdoor environments, designed and built with purpose to engage, inspire and to support learning and development. Our classrooms are bright, clean and colourful with working wall displays and interactive screens. They benefit from connecting unit areas, which provide quieter learning spaces, cosy reading corners and opportunities to embrace creativity. All are well-resourced and provide plenty of stimulus and inspiration.

Our spacious hall connects with all units and classrooms, providing host to a range of activities with easy access. In 2021 we opened a bespoke school library, which is always bursting with a selection of quality books covering a wide range of topics and genres with a calming space to read and relax. Our children thrive on being able to browse and borrow books themselves and our Reading Champions help to keep it well stocked and relevant.



We are fortunate to have large areas of outdoor space which we have developed to provide high quality provision, children spend time outdoors every day. These areas include an outdoor classroom, a pond, quiet garden, trim trails (including two purpose-built climbing frames), a theatre, story-telling seating, two playing fields with a football pitch and athletic track, three playgrounds with basketball and netball courts (including equipment such as trikes and scooters), a designated Forest School area with fire-pit and also a Woodland Walk, our onsite nature trail.



Our Forest School provides tailored child-centred opportunities for growth through regular sessions delivered by fully qualified staff. Children are able to lead as they explore a programme which embraces repetitive contact with nature, our grounds are well-equipped with resources to support this.



We have taken considerable care to create, update and improve learning environments with a commitment to continuously evolve to best meet the needs and aspirations of our pupils. You'll find our own bespoke graphics and characters, as well as fully functional spaces which allow children to interact with displays from which they all take great pride and ownership.



# Building Learning Power

Prepared for the future

Southill Primary pupils learn how to collaborate with others, to solve problems and to persevere in the face of challenges, helped by developing their own 'learning powers' which they apply to whatever skills or knowledge they choose to pursue in their adult life. By teaching children how to learn, they are ready to choose 'what to learn' for themselves ... and it really works! We've noted four key attributes of independent, successful learners. Our pupils came up with their own fun, colourful characters to represent these characteristics and to help them to better understand their powers:



## Ninja Nutmeg

They are **resourceful**

They are curious and ask questions.  
They think about what they have learned before and know what resources they can use to help them.



## Sir Owlington

He is **reflective**

He thinks about what he has done before and tries to improve his own work.  
He takes pride in the things he can do already, but is always aware of how something could be even better.

## Captain Shelby

He is **resilient**

He doesn't give up when things get difficult.  
He keeps trying until he succeeds!



## Agent Buzzbee

She is **reciprocal**

She knows when it would be best to work by herself and when to work with others.  
She listens to her teammates and learns from them.

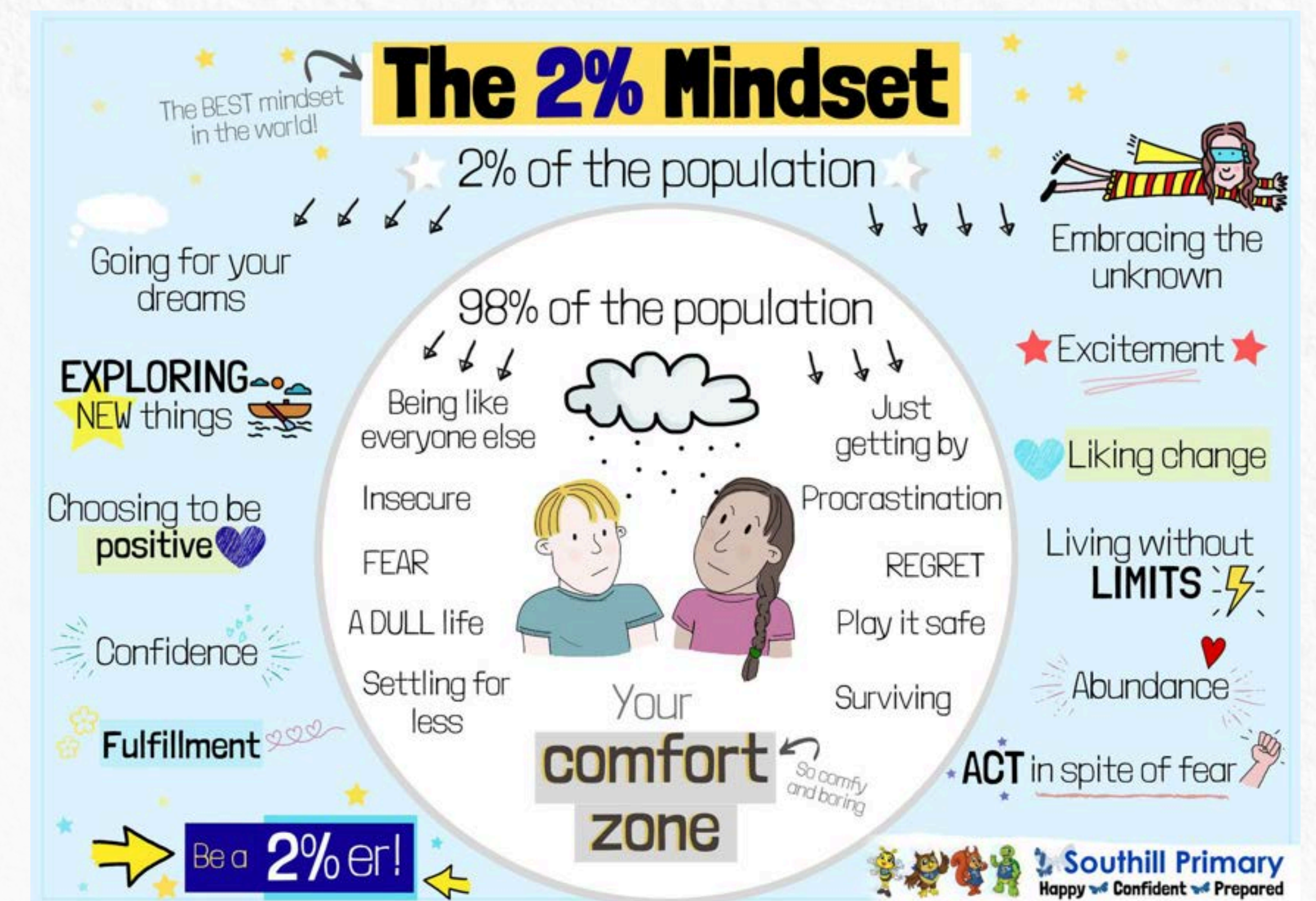


Our BLP characters are well loved, you'll find them all around our school. Postcards are regularly sent home in recognition of children who display elements of these learning powers at school, staff are pleased to spot these attributes and children are always keen to collect them all!

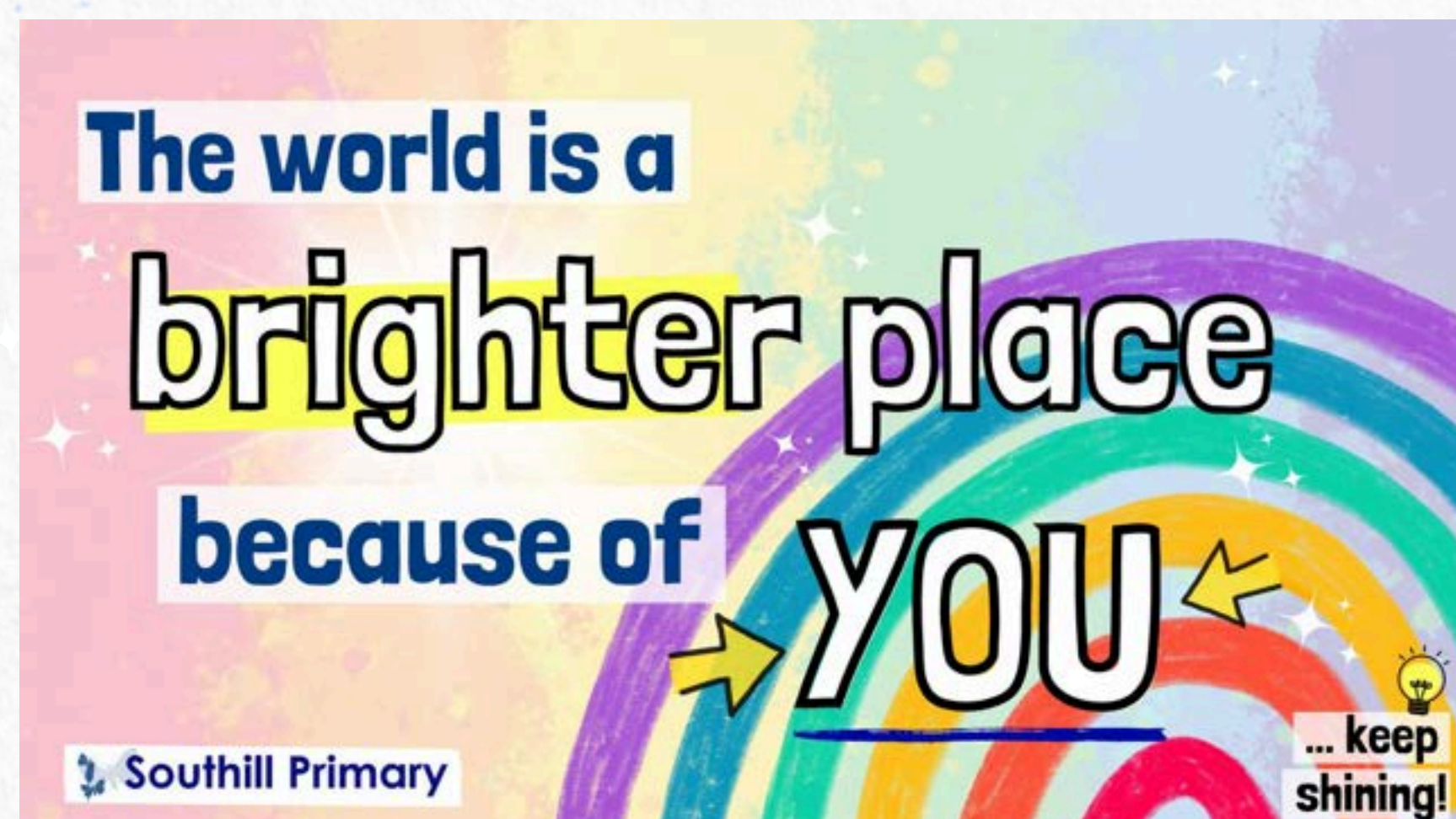
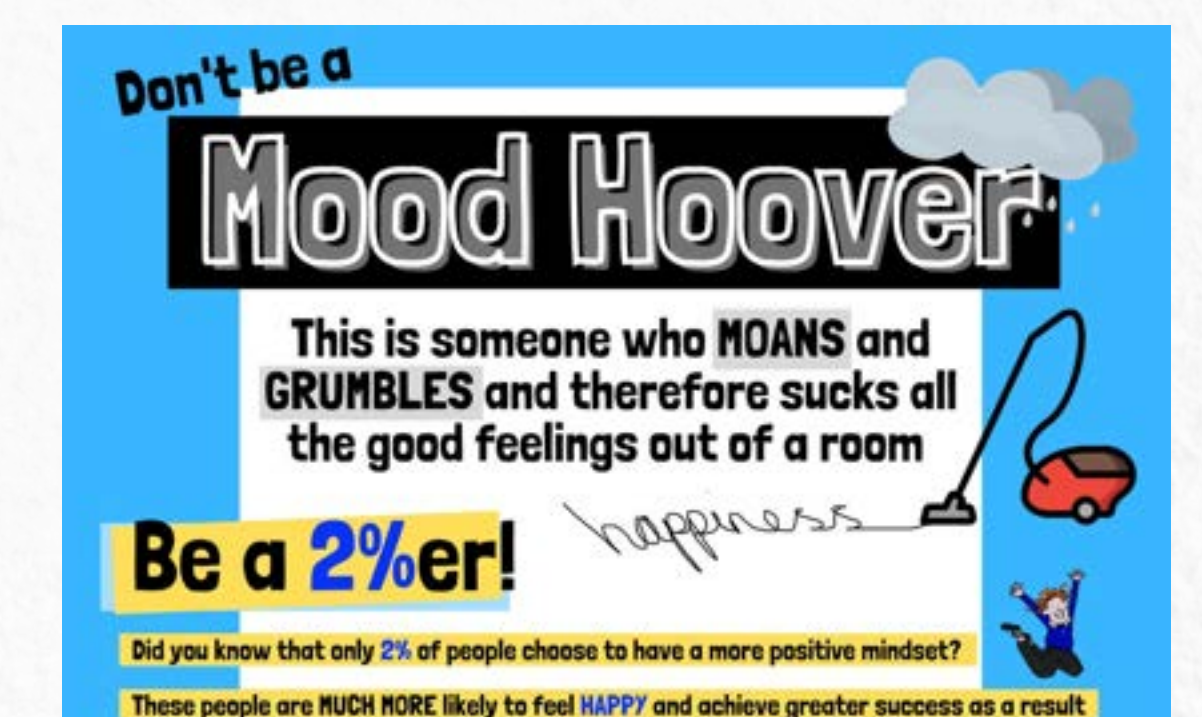


# OUTSTANDINGLY HAPPY @ Southill Primary

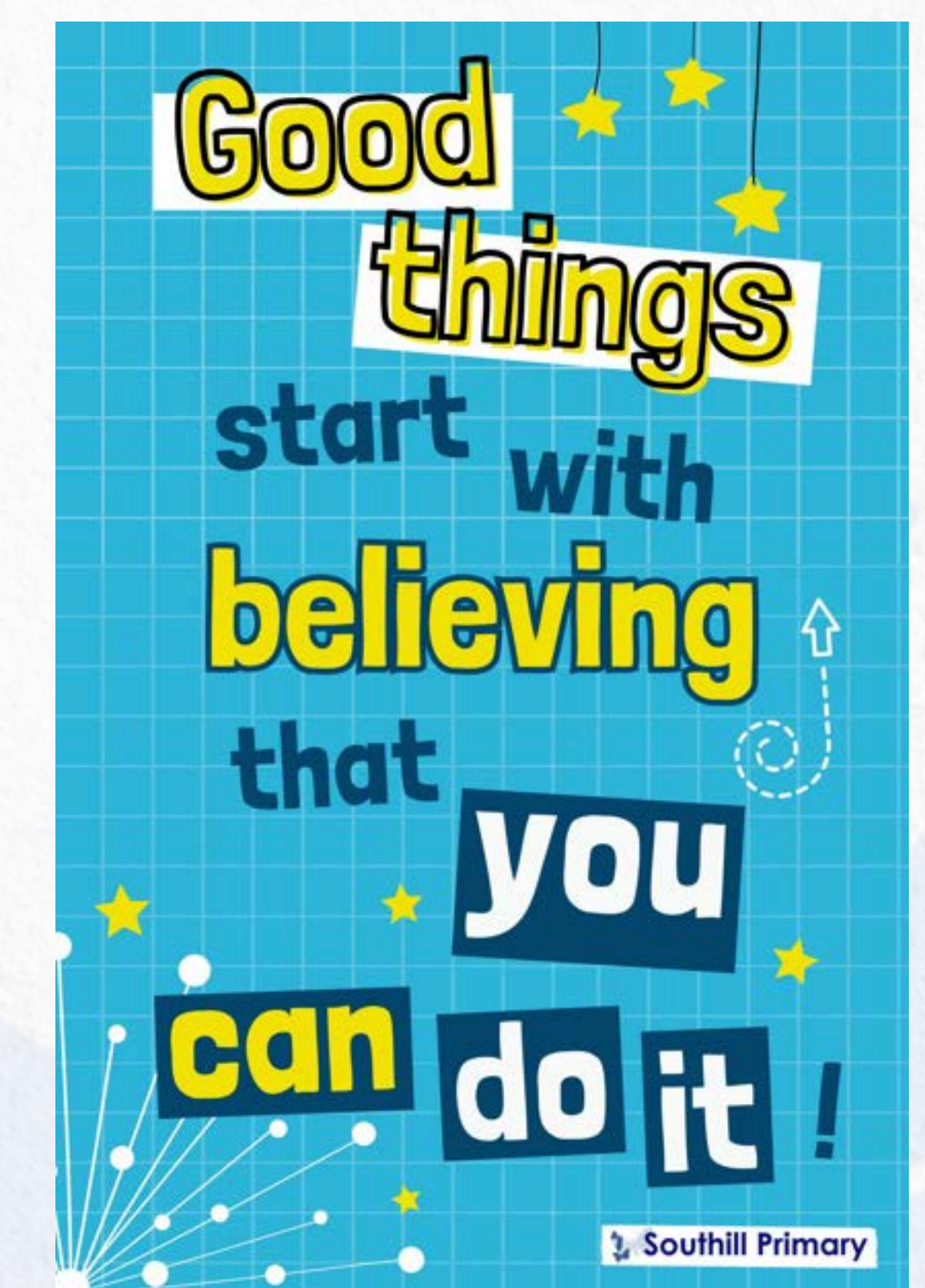
Be a 2%er! NOT a Mood Hoover. This is a well-known and understood phrase here at Southill Primary, we make it our mission to be part of the 2% of the population who choose to adopt a more positive outlook. We even share a 2%er Assembly where we celebrate children weekly who display this attitude! You can't make yourself be happy, but you can choose to be positive and are therefore more likely to feel happiness and achieve success as a result. We've many tricks and tips that we like to share to help other people, our Wellbeing Wizards meet regularly as ambassadors within each class.



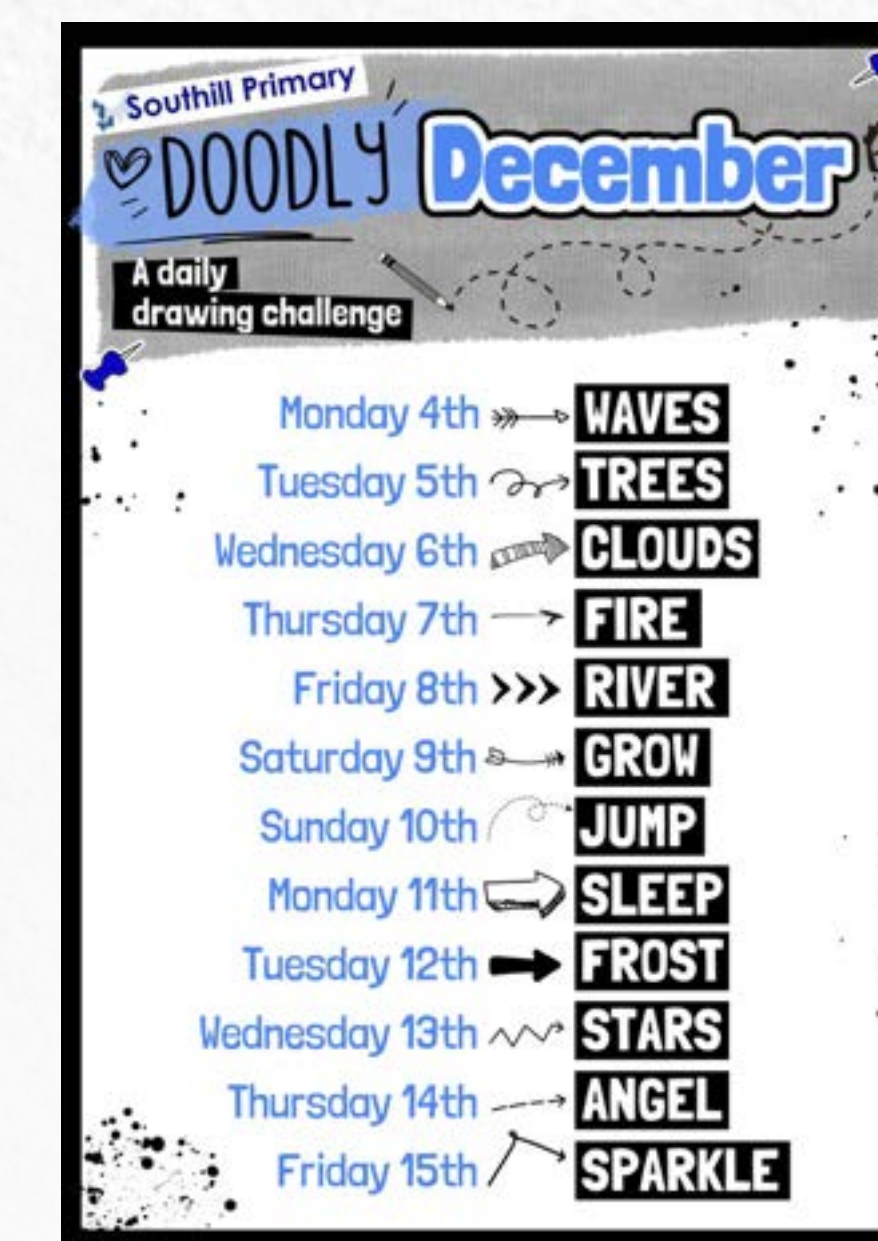
You'll find many of our motivational graphics throughout the school. We inspire children daily in a number of ways, placing strong value on the importance of their emotional wellbeing. Classes also take part in daily Stormbreak sessions, a programme of activities designed to support both physical and mental health linking to specific concepts such as Resilience, Relationships, Self-worth and Hope and Optimism.



We regularly discuss, plan and celebrate our aspirations too, with focus on knowing which steps are needed in order to achieve them. Supporting children to aim high also ignites their imagination, where anything is possible. Our pupils dream of becoming astronauts, zoo keepers, musicians, vloggers, business owners and ('the best') fish and chip sellers! We have a variety of books available to help children to aspire, we ensure that these are physically available within interactive displays for them browse whenever they wish.



Our school community are a very valuable asset to our school, we foster strong home/school links and welcome our families in many ways. We recognise that these connections are vital in ensuring the very best for our pupils and take great pride and effort in building these important relationships. In addition, we are lucky to be situated within an area where we can extend these links to the wider community, pupils can often visit local care homes, Emmanuel Church and amenities within easy walking distance and we also regularly share interactive activities and celebrations within Southill.



## Fitness Thursdays

Fitness Thursdays take place before school and feature a themed physical activity each week, ranging from 'Scoot n'toot' circuits with bikes and scooters, 'Hula Havoc' hoops, dancercise aerobics and walks to school. Families join us for these sessions, including our staff. Our very own Bike Bus, organised by parents, sets off through Southill on Fridays with multiple bike bus stops for children and families to join us on a cycle ride to school. They make a great start to the day and residents often take to the pavements to wave (and encourage) our riders along the way. Families are also invited to join us at weekly Celebration Assemblies where we recognise children's achievements both in and out of school.



In addition to our school website, we have a host of active and informative social media channels where our school community can regularly engage. Class blog posts link to these pages, along with monthly bedtime stories read and recorded by Southill staff, innovative and interactive projects, updates and activities. Our channels are well subscribed and we invest time into media elements which can therefore extend beyond the classroom. These channels, along with our website and electronic messaging, form effective, multipurpose links by enabling us to reach out to our families and school community in a variety of effective ways.



# Our Curriculum and Enrichment

The curriculum at Southill Primary is designed to be rich and demanding. It provides opportunities for all children to develop as independent, confident, curious and successful learners with high aspirations, who know how to make a positive contribution to their community and to the wider society.

We are committed to ensure that academic success, creativity and problem solving, as well as physical development, wellbeing and mental health are key elements that support the development of the whole child. We promote positive behaviour and attitudes to learning, with many strategies in place to support this. Our school celebrates and embraces diversity while supporting children's spiritual, moral, social and cultural development, ensuring that they are well prepared for life in modern Britain. Our curriculum incorporates the statutory requirements of the National Curriculum and is carefully sequenced so that children build on prior learning, skills and knowledge.



Our approach to the daily teaching of English and Maths is cohesive, purposeful and inspiring, through use of Little Wandle Letters and Sounds, Literacy Tree and White Rose Maths. We teach foundation subjects through a project based approach. Our outdoor provision is unique and enables children to spend time outside every day, with the addition of frequent educational trips and visits (at least once per term) which are always carefully planned to enhance and enrich learning within these subjects. Our planning is sequential and progressive and our staff are fully trained and confident in their delivery.







Subject Leaders play an important part in the success of our curriculum by leading a regular programme of monitoring, evaluation and review including the celebration of good practice, contributing to our ongoing commitment to evolve and improve. All leaders are given training and opportunities to continuously develop their subject knowledge, skills and understanding, to sufficiently equip and empower them to support our staff and curriculum.

Reading is at the heart of all we do, we pride ourselves on our exceptional reading culture and prioritise the teaching of reading. Children who read daily are more likely to succeed and we see the results of this in class. We invest heavily in training our staff to be reading teachers and in books and other materials to excite, inspire and encourage all children to read for pleasure. And, that is exactly what our pupils do! The book buzz here at Southill Primary is infectious, children lead by their own recommendations and are read aloud to in class every day alongside a variety of daily activities such as phonics, guided group and whole class reading and book talks. Our enthusiastic team of Reading Champions meet weekly and are involved in multiple reading projects which they help to implement across the whole school based on their very own ideas. Our school library is open to children every day, it's a very popular place to hang out!



We delight with ensuring that children enjoy a wide range of sporting activities with regular opportunities to keep fit, active and healthy. Our PE curriculum is carefully planned and we ensure that staff have the skills and knowledge to teach effectively. In addition to our lively PE sessions, children will work with specialist coaches as they learn new skills in rugby, tennis, and cricket. There are also plenty of opportunities to represent our school in many local games and competitions and children absorb regular key messages about the importance of physical activity and all its benefits. We extend sessions within our school community with popular weekly Fitness Thursdays and a Bike Bus. We are also proud to continue to hold the 'Active School Games GOLD Award' for competitive sports.



We are lucky to have a specialist music teacher who focuses on engaging pupils with creative and practical lessons using innovative technological approaches. Children compose, sing and learn to play a wide variety of instruments and they tell us that they love music! They also have the opportunity for guitar and drum tuition from specialist teachers. Our Rock Band performs several concerts throughout the year including end-of-term spectaculars, talent shows and at events within the local community. Children master the art of teamwork by playing together and to a wide variety of audience, while being introduced to instruments they may not have previously experienced.

Learning outside the classroom is a valuable opportunity to develop confidence and resilience, take on new challenges and to work with different people in new ways. Visits and residential trips are always well supported by our families and provide memorable experiences, in addition to diverse and rich opportunities from which children can learn first-hand, developing a range of transferable skills and providing a wealth of opportunity in writing for a purpose.



Our pupils express that they love learning outside of school. We offer a varied timetable for extra-curricular activities with clubs that support the core curriculum offer, as well as those which develop specialist skills which have included our very own Rock Band, POP Stars, art and crafts, Reading Champions, board games, sewing, nature, eco and film clubs. We also regularly enjoy unique experiences such as stargazing evenings and theatre trips, often taking to the stage ourselves!



Opportunities for children to share their learning are frequent and include with each other and staff/pupils from other classes through school-based and external exhibitions, their families, performances, competitions and events with other local schools. Developing pupils' independence, confidence and motivation as learners and their sense of responsibility as future citizens is a key focus of all our teaching and learning. We also regularly celebrate pupil engagement and achievement through weekly wellbeing and celebration assemblies, postcards which are sent home, interactive displays and badges and certificates.

## What we can offer you

Southill Primary actively promotes and models excellent behaviour. We are proud of our wellbeing practice and support our staff in a number of ways, ensuring that we maintain a safe and welcoming working environment.

We are 'Outstandingly Happy' and this is official!

We have adopted a 2%er mindset and are committed within school to contribute to this.

We are an Ofsted 'good' school with high academic aspirations.

We work closely with Mental Health Schools Team to ensure that our practice is up-to-date and relevant to best support all our staff, pupils and our families.

As a maintained school under Dorset Council, we provide our staff with a competitive range of benefits, including:

- Flexible working - we are open to discussing this at hiring point. We acknowledge that flexible working enables us to attract and retain the best talent to enable the very best outcomes for pupils in our school;
- Pay increases based on competency increments;
- Learning, career development and progression opportunities;
- CPD time with resources to enable staff to keep a personal portfolio;
- Additional leave and entitlements including a range of paid leave and career break options;
- Family friendly policies including enhanced maternity leave, adoption and paternity pay (above statutory provisions);
- Salary sacrifice schemes including childcare vouchers and 'bike to work';
- Membership to the Teachers Pension Scheme (a career average scheme);
- Specialised advice and guidance to support your wellbeing.

We want staff to build a rewarding and successful career with us. Our generous range of benefits are designed to help staff to perform their best by providing a work/life balance to support wellbeing and by encouraging personal and professional growth.



# Summary / How to Apply

*Job Title* Class teacher  
*Contract Type/Term* Full time, permanent  
*Start Date* September 2025  
*Location* Weymouth, Dorset

*Closing date* 11.59pm on Wednesday 30 April 2025  
*Shortlisting date* Friday 2 May 2025  
Applicants will be advised within 3 working days after the shortlisting date whether they have been successful.

*Interview date* Thursday 8 May 2025

To apply, candidates should submit their application through Dorset Council website.

Visits to our school are welcomed by appointment. To arrange a convenient time or for an informal chat, please get in touch:

Mrs Sharon Howe, Senior Admin Officer  
01305 773144  
[office@southill.dorset.sch.uk](mailto:office@southill.dorset.sch.uk)

We are committed to robust Safer Recruitment processes as part of our commitment to safeguarding and promoting the welfare of children and young people. As part of this process, we will conduct online searches of shortlisted candidates. The purpose of these checks are purely based on the suitability of an individual to work with children, and includes all aspects of social media and online activity (internet searches). As care must be taken to avoid unconscious bias and any risk of discrimination, these searches will be conducted by a person not part of our appointment panel and information will only be shared if and when findings are relevant and of concern.

This role is UK based and your Right to Work will need to be established as part of the appointment process.

Southill Primary values diversity and inclusivity. We aim to eliminate unlawful discrimination and promote diversity throughout our whole workforce. We want our workforce to be representative of all sections of our community, we therefore give equal opportunities to all applicants. We do not discriminate on any basis. More info can be found within our Equality Information and Objectives policy [HERE](#),

**Diverse**  
**Inclusive**  
**Accepting**  
**Welcoming**  
**Safe Space**  
**For Everyone**

**Southill Primary**  
Happy Confident Prepared

# Southill Primary School

Sycamore Road  
Southill  
WEYMOUTH  
Dorset. DT4 9UF

[office@southill.dorset.sch.uk](mailto:office@southill.dorset.sch.uk)

01305 773144

[www.southill.dorset.sch.uk](http://www.southill.dorset.sch.uk)

